



WALLTOPIA

CLIMBING WALLS

UNIVERSITIES & SCHOOLS

Alice Smith International School

MALAYSIA Serdang

Climbing Surface: 231 m² | 2 486 ft²

Year of Manufacturing: 2019

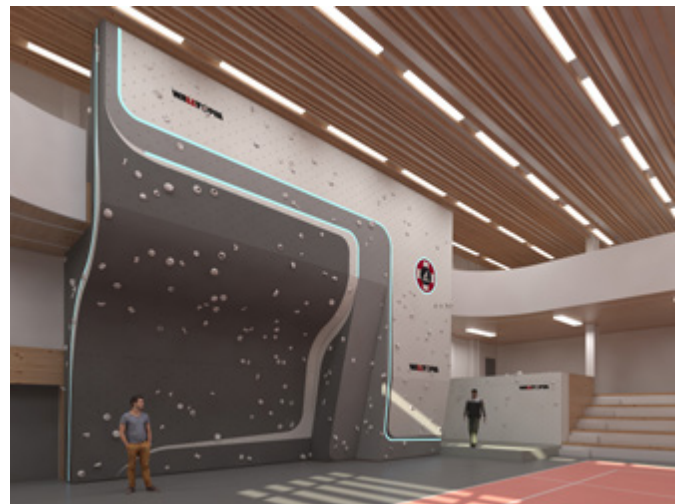


Leysin American School

Leysin, Switzerland

Climbing Surface: 169 m² | 1 822 ft²

Year of Manufacturing: 2016

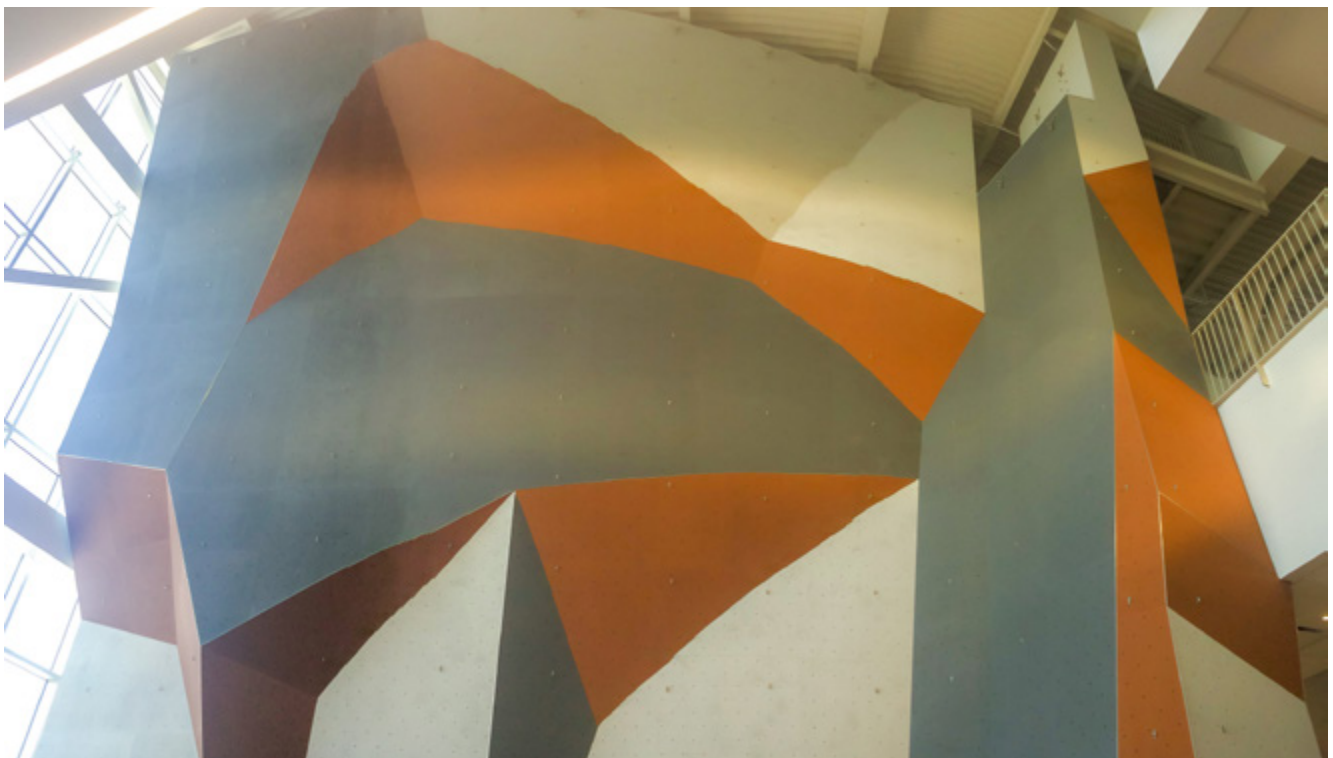


Utah State University

Logan, USA

Climbing Surface: 296 m² | 3 190 ft²

Year of Manufacturing: 2016



Simon Fraser University

Burnaby, Canada

Climbing Surface: 204 m² | 2 198 ft²

Year of Manufacturing: 2015



Global Matrix International School

Seremban, MALAYSIA

Climbing Surface: 155 m² | 1 668 ft²

Year of Manufacturing: 2015

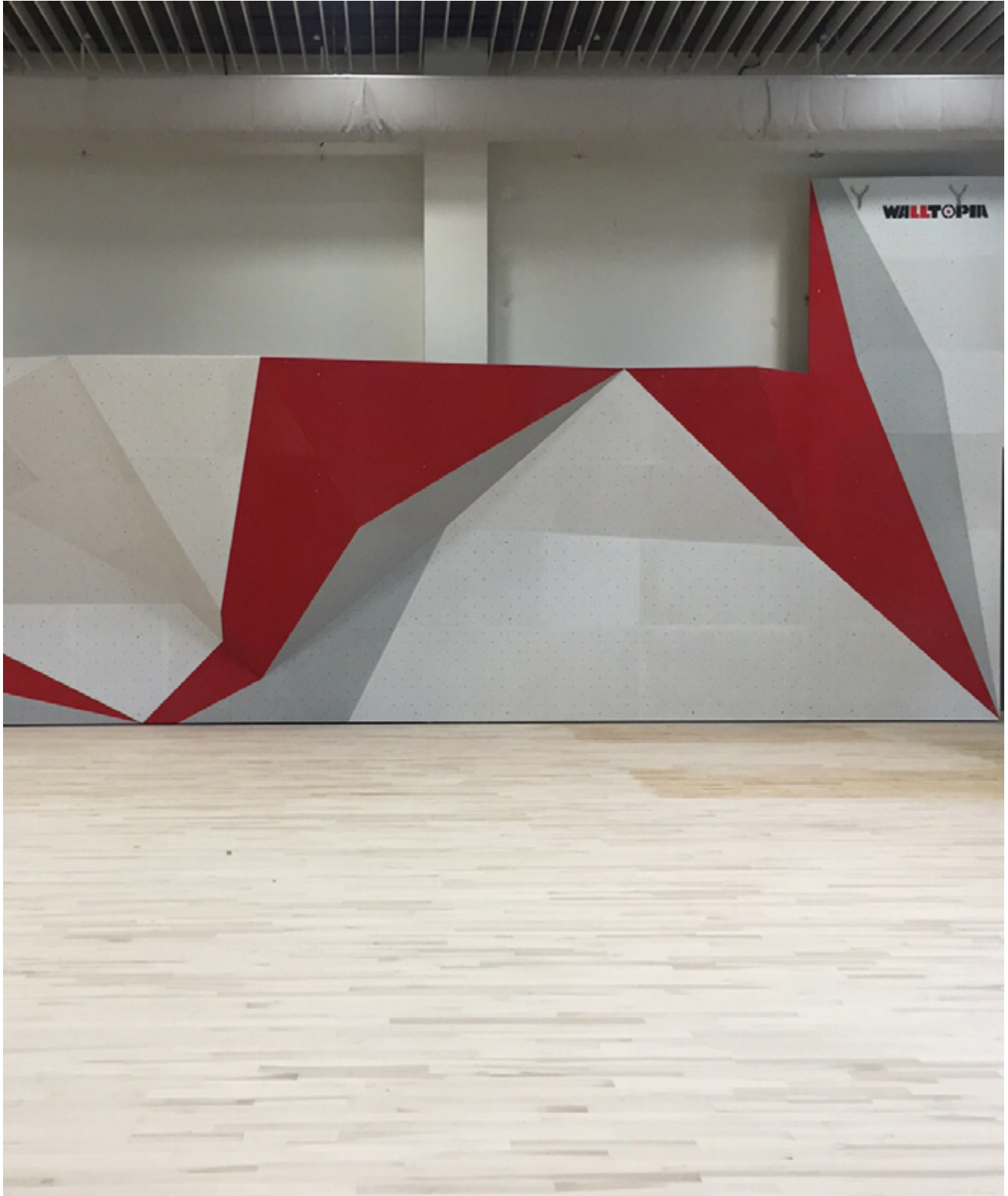


Singapore University of Technology

Singapore

Climbing Surface: 82 m² | 882 ft²

Year of Manufacturing: 2015

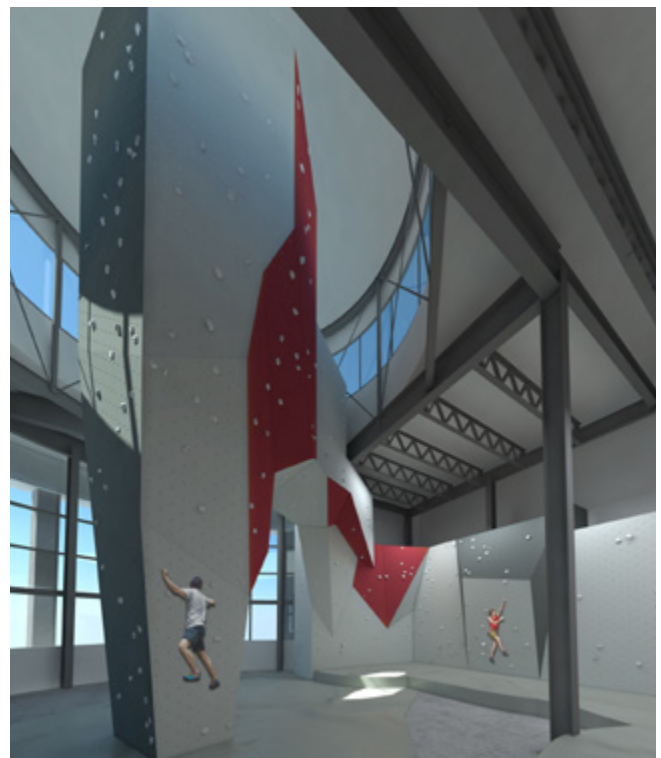


Liberty University

Lynchburg, USA

Climbing Surface: 375 m² | 4 037 ft²

Year of Manufacturing: 2014



Utah Valley University

Orem, USA

Climbing Surface: 291 m² | 3 132 ft²

Year of Manufacturing: 2014



University of Victoria

Victoria, CANADA

Climbing Surface: 174 m² / 1 870 ft²

Year of Manufacturing: 2014



Nexus International School

Putrajaya, Malaysia

Climbing Surface: 80 m² | 861 ft²

Year of Manufacturing: 2014



International School

Bangkok, THAILAND

Climbing Surface: 153 m² | 1 647 ft²

Year of Manufacturing: 2014

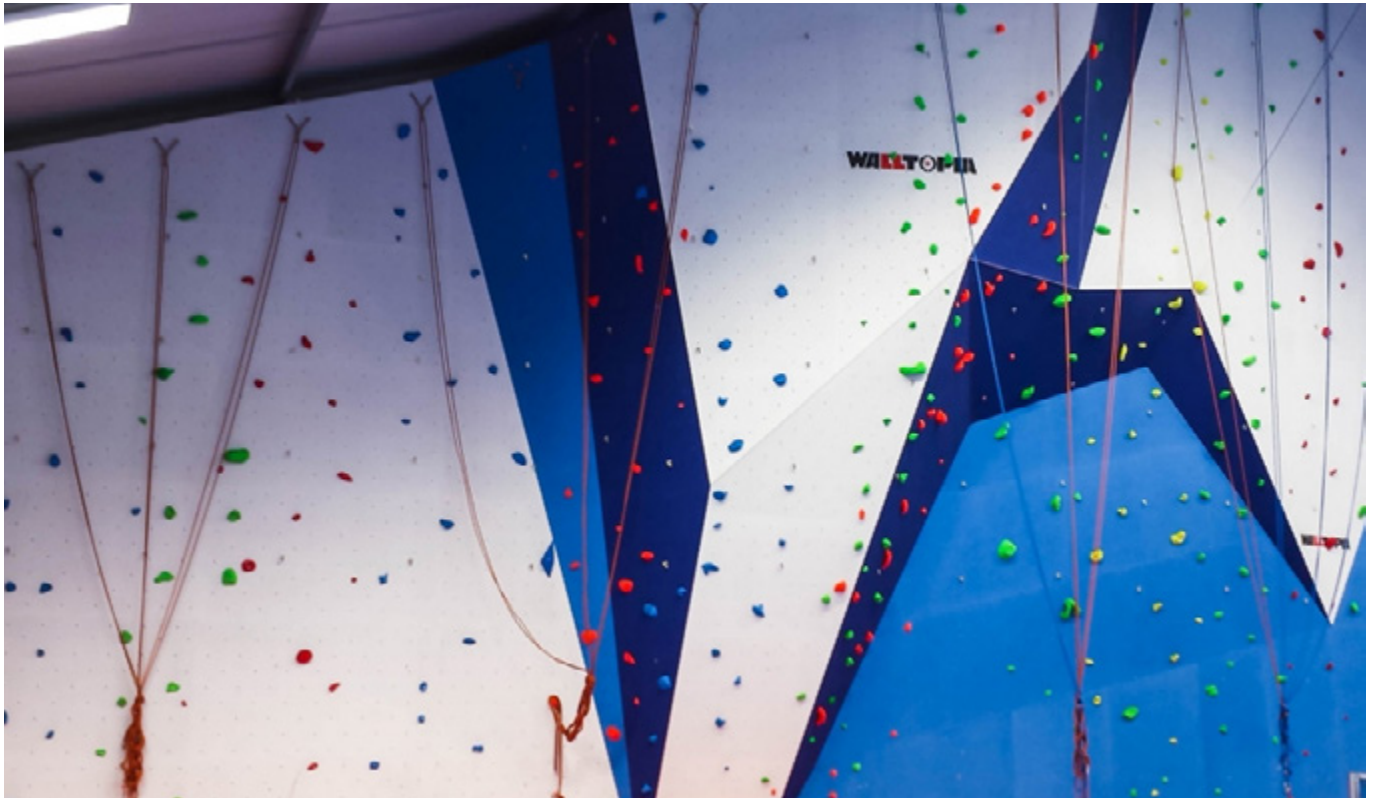


Idema Sport School

Engis, BELGIUM

Climbing Surface: 193 m² | 2 077 ft²

Year of Manufacturing: 2014



KTJ International School

Mantin, MALAYSIA

Climbing Surface: 124 m² | 1 334 ft²

Year of Manufacturing: 2013



American University

Sharjah, UAE

Climbing Surface: 78 m² | 839 ft²

Year of Manufacturing: 2012



Ascend International School

Mumbai, India

Climbing Surface: 30 m² | 323 ft²

Year of Manufacturing: 2012



Abingdon School

Abingdon, UK

Climbing Surface: 162 m² | 1 722 ft²

Year of Manufacturing: 2010



Hallym University

Chuncheon, South Korea

Climbing Surface: 58 m² | 628 ft²

Year of Manufacturing: 2008



Chantier School

Outreau, FRANCE

Climbing Surface: 260 m² | 2 799 ft²

Year of Manufacturing: 2008



Auxerre School Wall

Auxerre, FRANCE

Climbing Surface: 424 m² | 4 564 ft²

Year of Manufacturing: 2007

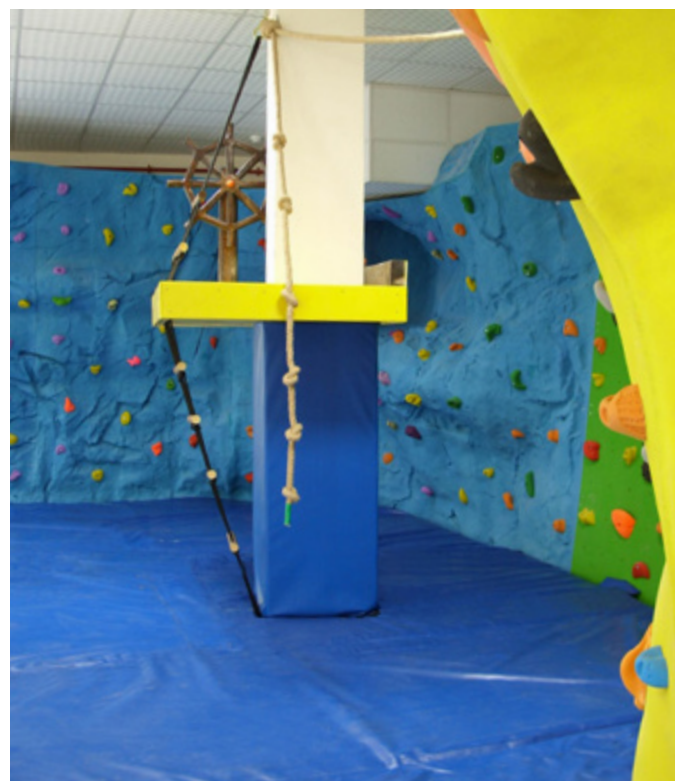


International School of Arts and Sciences

Dubai, UAE

Climbing Surface: 150 m² | 1 615 ft²

Year of Manufacturing: 2007



University of Derby - Derby, UK

Climbing Surface: 180 m² | 1 937 ft²

Year of Manufacturing: 2010





Plymouth University

Plymouth, UK

Climbing Surface: 156 m² | 1 679 ft²

Year of Manufacturing: 2010



University of Goettingen

Goettingen, Germany

Climbing Surface: 141 m² | 1 518 ft²

Year of Manufacturing: 2006
