

WALLTOPIA

**| Outdoor
climbing walls**



BEHIND THE WALLS

Climbing structures that withstand the weather impact

Outdoor climbing structures bear loads of climbing activities similar to any other climbing wall but on top of that they have to be able to resist weather impact.

Building a structure exposed to the elements means that additional factors such as snow and wind loads, effects of rain and sun exposure, temperature changes and others have to be taken into consideration. In order to make an outdoor structure suitable for use and ensure appropriate longevity, the range of materials is different from the ones used for indoor climbing structures.



STRUCTURE

Hot Dip Galvanized Steel Structure

Walltopia uses Hot Dip Galvanized steel structure that is commonly used in general construction work. This type of structure is corrosion-resistant and can be used outdoors.

The common practice for indoor metal construction of a climbing walls to prime and paint it, with the paint most often used for this purpose being polyurethane or alkyd. However, if the climbing wall is installed outdoors, and especially in a humid region, it takes less than a year for the painted construction to start rusting. As a result, the operator needs to repaint it often increasing the spendings for yearly maintenance and needing to close sections of the wall at times. This is why, when it comes to outdoor climbing walls, we hot-dip galvanize all elements of our steel construction which prevents it from corroding. All fasteners are also stainless steel or hot-dip galvanized.



ROOFS



Walltopia recommends adding roofs for outdoor climbing walls and boulders. The roof provides protection and longer lifespan of the climbing wall panels and structure and also better customer experience allowing visitors to climb during bad weather conditions.

T-NUTS

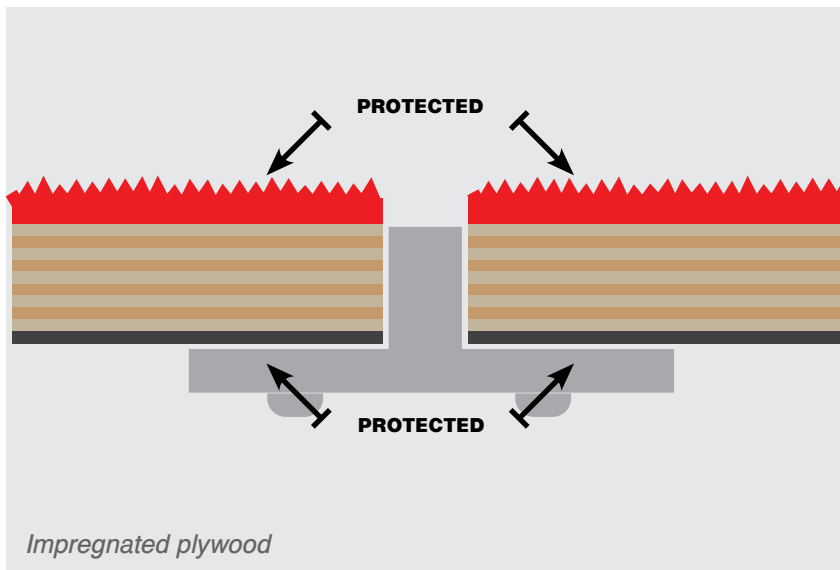


In order to ensure maximum water resistance and durability for the product, we equip our outdoor structures with stainless steel t-nuts and stainless fixing screws.

OUTDOOR CLIMBING WALL PANELS

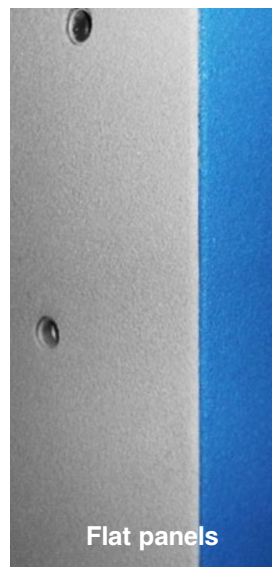
WALLTOPIA PREMIUM PANELS

Introducing a new technology, not familiar to the climbing industry to date, the Walltopia Premium Outdoor Panels are highly durable and weatherproof, resistant to impact, infiltration, heat and fire. The material does not change its characteristics over time while offering the precision, automation and speed of plywood production. Walltopia premium panels are also very easy for maintenance compared to fiberglass as they allow change of individual panels with precise dimension up to 1 mm.



Impregnated plywood

It's not a common practice in the industry to impregnate the back of the plywood panels installed outdoors. This can be very damaging as the humidity can spread within the panel and dramatically shorten its lifespan. This is why we impregnate the back side of the panels for outdoor climbing walls just as well, giving them better protection from the contact with the elements. However, plywood is not completely weatherproof and does have a shorter lifespan compared to fiberglass and Walltopia premium outdoor panels.



Fiberglass panels

More durable material compared to plywood, fiberglass is 100% water resistant, it does not change its characteristics over time. Fiberglass also gives the freedom to design and produce any imaginary shape including rocklike structures and curves. It lacks the precision of shape achieved with a CnC machine and doesn't allow painting automation which may lead to color imperfections. Fiberglass needs longer production time compared to plywood and Walltopia premium panels.

OUTDOOR CLIMBING WALL PANELS

Comparison Table

	Outdoor Premium Panels	Fiberglass Panels	Exterior Plywood Panels
Durability	●●●●●●	●●●●●◎	●●●●◎◎
Impact Resistance	●●●●●●	●●●●●◎	●●●●◎◎
Water Resistance	●●●●●◎	●●●●●◎	●●◎◎◎◎
Infiltration Resistance	●●●●●◎	●●●●●◎	●◎◎◎◎◎
Fire Resistance	●●●●●◎	●●●●◎◎	●●◎◎◎◎
Heat Resistance	●●●●●◎	●●●●◎◎	●●◎◎◎◎
Reaction to Fire according to EN 13501-1	B-s1, d0	B-s1, d0	D-s1, d0
Quality Management System	ISO 9001:2015	ISO 9001:2015	ISO 9001:2015
Compliance with EN 12572 Climbing Walls Standard	✓	✓	✓
Stainless Steel T-nuts	✓	✓	✓
Hot Dip Galvanized Steel Support Structure	✓	✓	✓
Type of Panels	Flat	Flat, Curved, Rock-topia	Flat
Easy Screwing of Volumes	●◎◎◎◎◎	●◎◎◎◎◎	●●●●●●
Production Speed	●●●●●◎	●◎◎◎◎◎	●●●●●●
Production Precision with CNC Machines	●●●●●●	●◎◎◎◎◎	●●●●●●
Production Color Consistency with Automatic Robot Painting	●●●●●●	●◎◎◎◎◎	●●●●●●
Installation Speed & Precision	●●●●●◎	●●●●◎◎	●●●●●●
Maintainence	●●●●●◎	●◎◎◎◎◎	●●●●◎◎



**CONSTRUCTION OF THE
CLIMBING WALL**

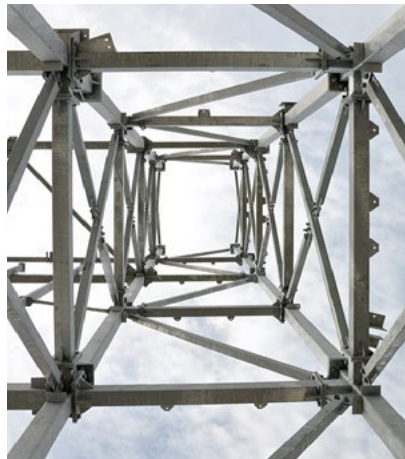
THE PROCESS

The construction process is illustrated through a recently finished project - the outdoor tower at DAV Beckum, Germany. Thanks to our client who documented in detail every step of the process and shared the images with us, we can show you the full process.

1. Delivery of materials



2. Installation of main steel frame



3. Installation of roof steel beams



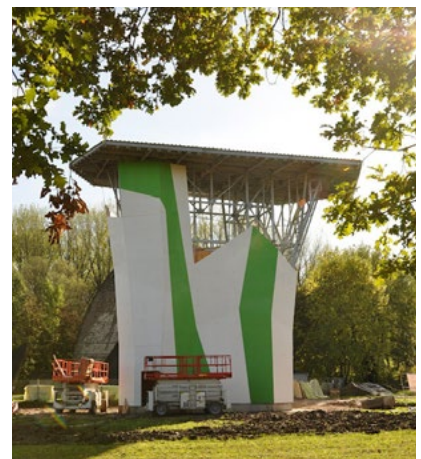
4. Installation of secondary steel columns



5. Installation of roof metal sheets



6. Installation of climbing panels



ROCKTOPIA

COMPLETED
PROJECTS

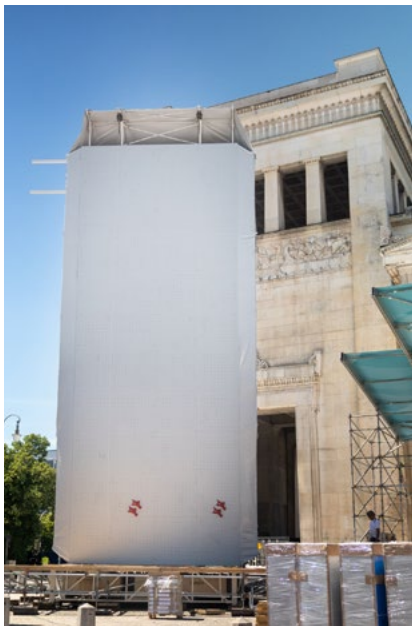


European Championships 2022

GERMANY, MUNICH

Completed	2022
Climbing Area	514 m ² 5 532 ft ²
Style	Geom3x
Facility	Competition Wall

WWW.MUNICH2022.COM/EN/SPORT-CLIMBING



Die Kletterhalle St. Gallen

SWITZERLAND, ST. GALLEN

Completed	2022
Climbing Area	1 400 m ² 15 070 ft ²
Style	Geome3x
Facility	Full Service Climbing Gym

WWW.DIEKLETTERHALLE.CH

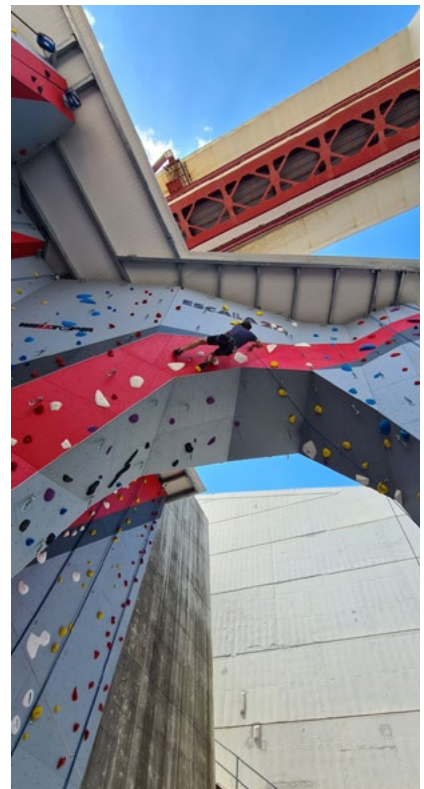
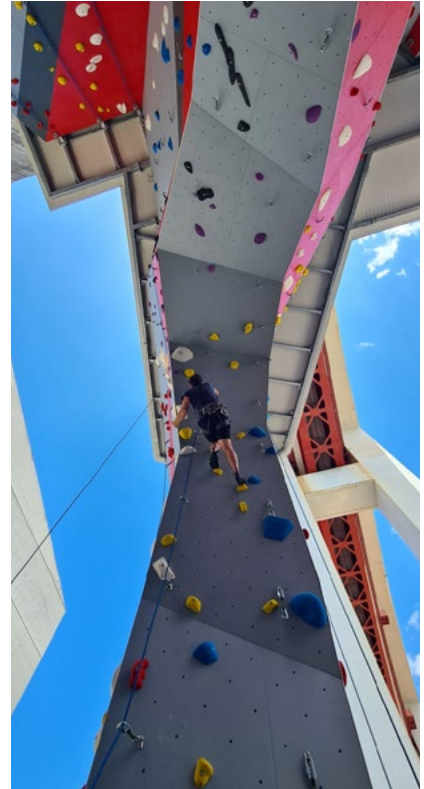


Escala 25

PORTUGAL, LISBON

Completed	2022
Climbing Area	440 m ² 4 736 ft ²
Style	Geome3x
Facility	Full Service Climbing Gym

[ESCALA25.COM](https://www.escala25.com)



Copa de Escalada

SPAIN, MADRID

Completed	2022
Climbing Area	285 m ² 3 067 ft ²
Style	Geome3x
Facility	Competition Wall



Eco Park Durres

ALBANIA, DURRES

Completed	2022
Climbing Area	1 600 m ² 17 222 ft ²
Style	Geome3x
Facility	Public Space



NaturFreunde Kletterhalle Dachau

GERMANY, DACHAU

Completed	2021
Climbing Area	1 545 m ² 16 630 ft ²
Style	Geome3x
Facility	Full Service Climbing Gym

WWW.NATURFREUNDE-KLETTERHALLE-DACHAU.DE

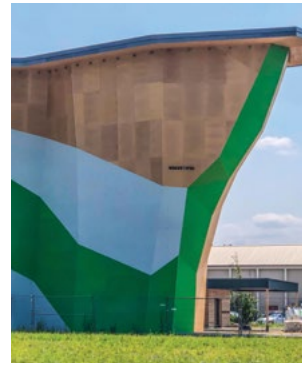


DAV Mannheim

Completed	2021
Climbing Area	872 m ² 9 386 ft ²
Style	Geome3x, Natural Wood
Facility	Outdoor Climbing Tower

GERMANY, MANNHEIM

WWW.DAV-MANNHEIM.DE



DAV Memmingen Outdoor Wall

Completed	2020
Climbing Area	235 m ² 2529 ft ²
Style	Geome3x Exterior
Facility	Climbing Gym, Outdoor Wall

GERMANY, MEMMINGEN

WWW.BOULDERHALLE-MEMMINGEN.DE



Competition Climbing Center

SERBIA, BELGRADE

Completed	2021
Climbing Area	1 027 m ² 11 054 ft ²
Style	Geome3x
Facility	Training Center & Comp Venue

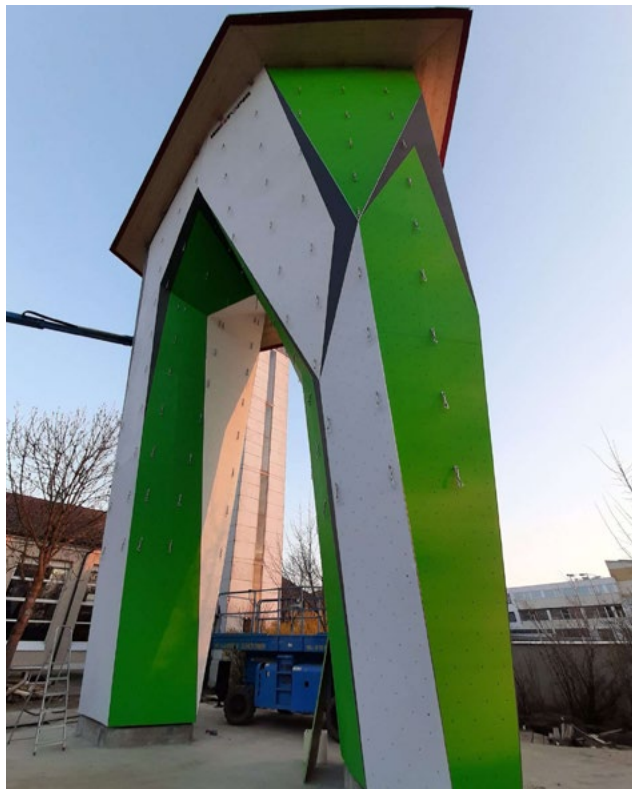
WWW.RZSPORT.GOV.RS



OeAV Waizenkirchen

Completed	2020
Climbing Area	270 m ² 2 906 ft ²
Style	Geome3x
Facility	Outdoor Climbing Tower

AUSTRIA, WAIZENKIRCHEN



Copen Hill

Completed	2019
Climbing Area	691 m ² 7 437 ft ²
Style	Geome3x
Facility	Facade Climbing Wall

DENMARK, COPENHAGEN

WWW.COPENHILL.DK





Big Wall - Luzhniki

Completed	2019
Climbing Area	900 m ² 9 687 ft ²
Style	Geome3x
Facility	Outdoor Climbing Center

RUSSIA, MOSCOW

WWW.BIGWALLSPORT.RU



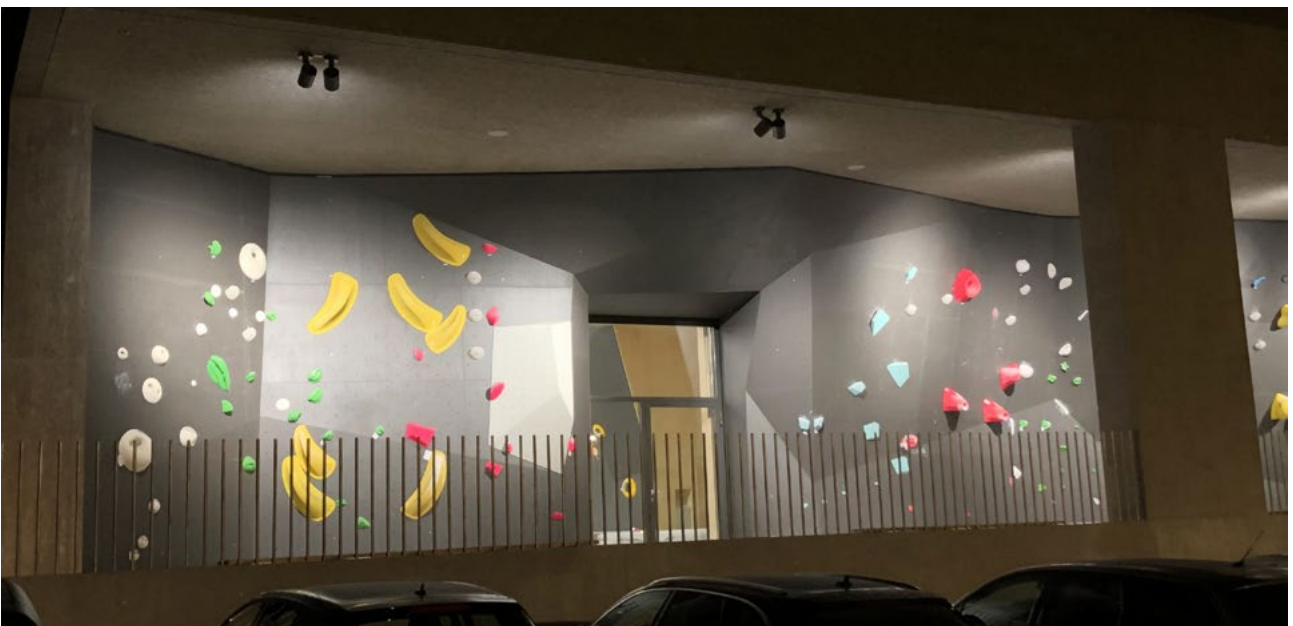


Kraftreaktor Boulderhalle

SWITZERLAND, LENZBURG

Completed	2021
Climbing Area	1 455 m ² 11 517 ft ²
Style	Geome3x, Natural Wood
Facility	Climbing Gym

[HTTPS://.KRAFTREAKTOR.CH](https://.KRAFTREAKTOR.CH)

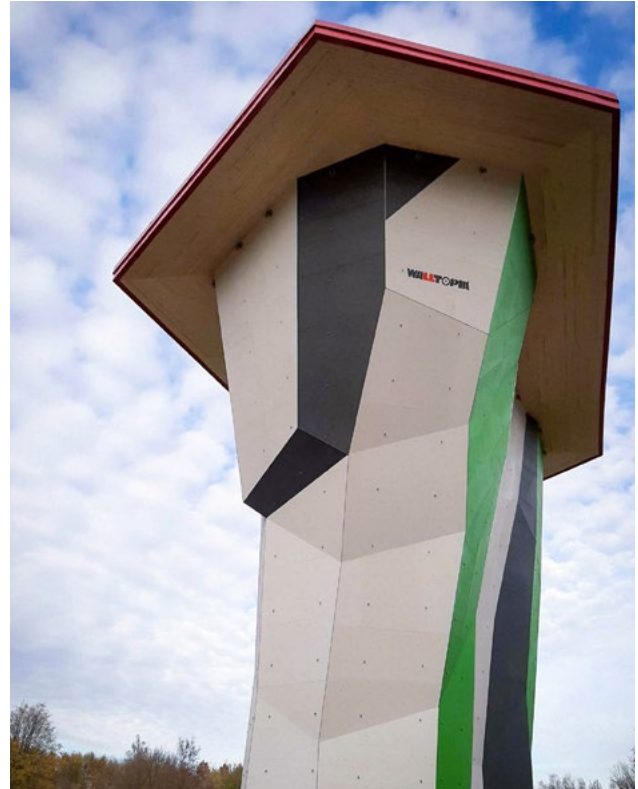


DAV Beckum Outdoor Tower

GERMANY, BECKUM

Completed	2019
Climbing Area	540 m ² 5 812 ft ²
Style	Geome3x
Facility	Outdoor Climbing Tower

WWW.ALPENVEREIN-BECKUM.DE



Roccadion

Completed	2018
Climbing Area	832 m ² 8 955 ft ²
Style	Geome3x
Facility	Full Service Climbing Gym

GERMANY, BÖBLINGEN

WWW.ROCCADION.DE



Totem Ecublens

Completed	2018
Climbing Area	1 149 m ² 12 367 ft ²
Style	Geome3x
Facility	Boulder Gym

SWITZERLAND, ECUBLENS

WWW.TOTEM.CH



Bergstation

GERMANY, HILDEN

Completed	2019 / 2016
Climbing Area	2 975 m ² 32 022 ft ²
Style	Geome3x
Facility	Full Service Climbing Gym

WWW.BERGSTATION.NRW

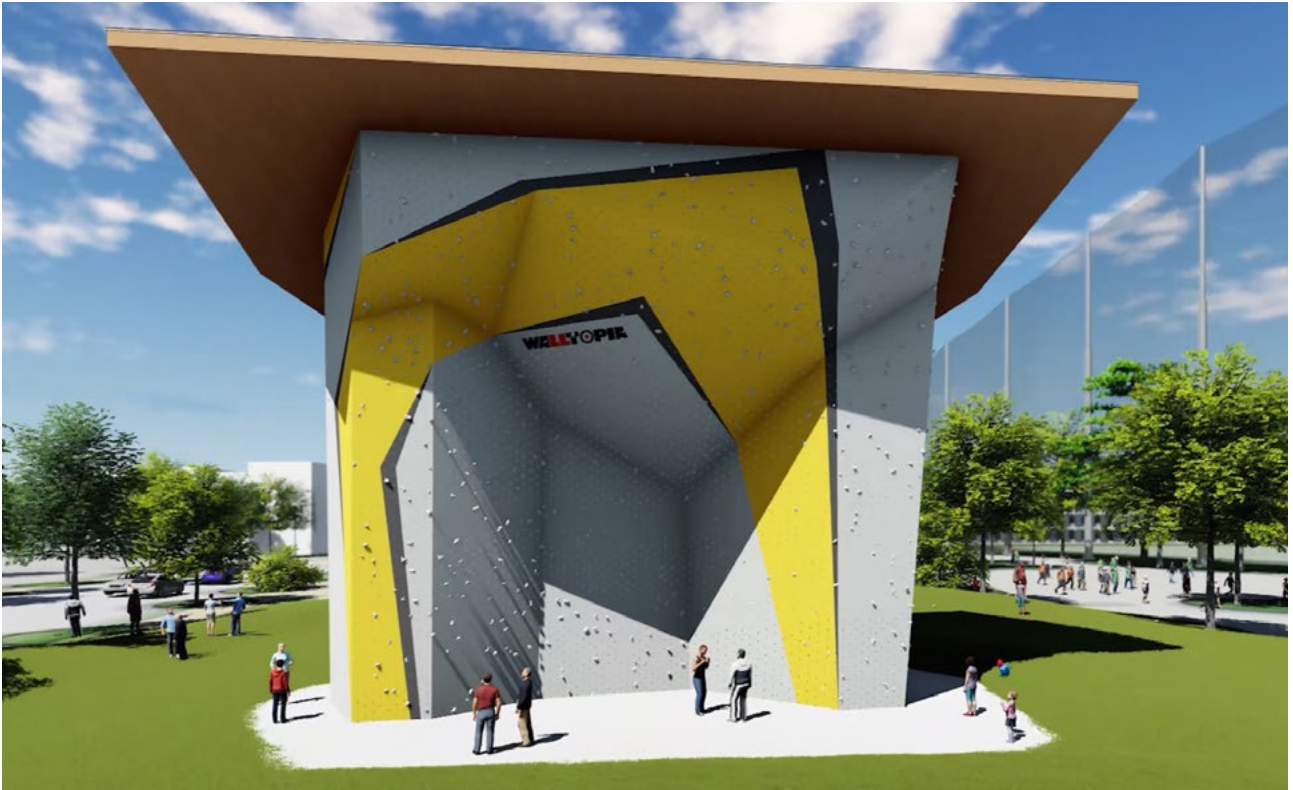


High Point Huntsville

USA, HUNTSVILLE

Completed	2018
Climbing Area	2 322 m ² 25 000 ft ²
Style	Geome3x
Facility	Full Service Climbing Gym

WWW.HIGHPOINTCLIMBING.COM/HUNTSVILLE



DAV Kletterzentrum

Completed	2018
Climbing Area	3 200 m ² 34 444 ft ²
Style	Geome3x
Facility	Full Service Climbing Gym

GERMANY, AUGSBURG

WWW.DAV-KLETTERZENTRUM-AUGSBURG.DE



Liyang Extreme Sports

CHINA, HENAN

Completed	2018
Climbing Area	828 m ² 8 912 ft ²
Style	Geome3x
Facility	Multisport Facility



DAV Sektion Heilbronn

GERMANY, HEILBRONN

Completed	2018
Climbing Area	573 m ² 6 167 ft ²
Style	Geome3x
Facility	Outdoor Climbing Tower

WWW.DAV-HEILBRONN.DE

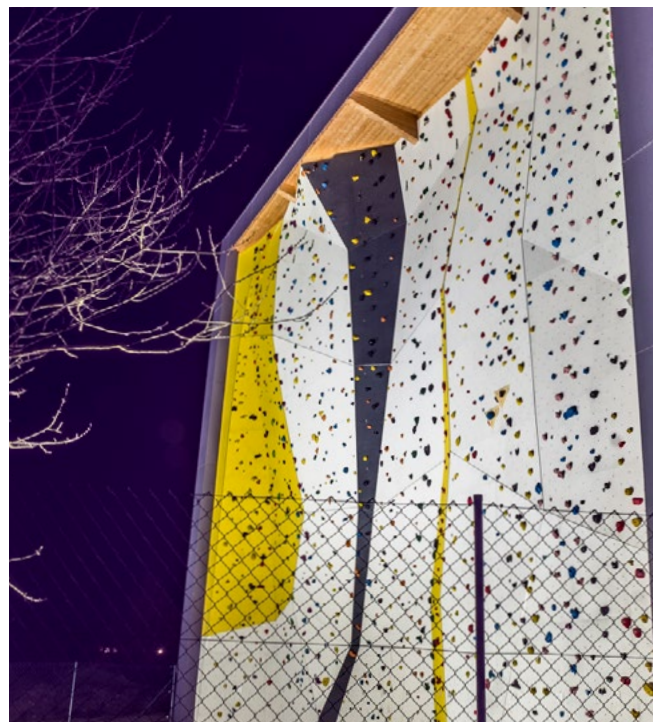


JURABLOC DAV Eichstätt

GERMANY, EICHSTÄTT

Completed	2018
Climbing Area	300 m ² 3 229 ft ²
Style	Geome3x
Facility	Full Service Climbing Gym

WWW.JURABLOC.DE



Kletterzentrum Innsbruck

AUSTRIA, INNSBRUCK

Completed	2017
Climbing Area	6 377 m ² 68 641 ft ²
Style	Geome3x
Facility	Full Service Climbing Gym

WWW.KLETTERZENTRUM-INNSBRUCK.AT





Swoboda Alpin

Completed	2017
Climbing Area	2 048 m ² 22 044 ft ²
Style	Geome3x
Facility	Climbing Gym

GERMANY, KEMPTEN

WWW.DAV-KEMPTEN.DE/SWOBODA-ALPIN

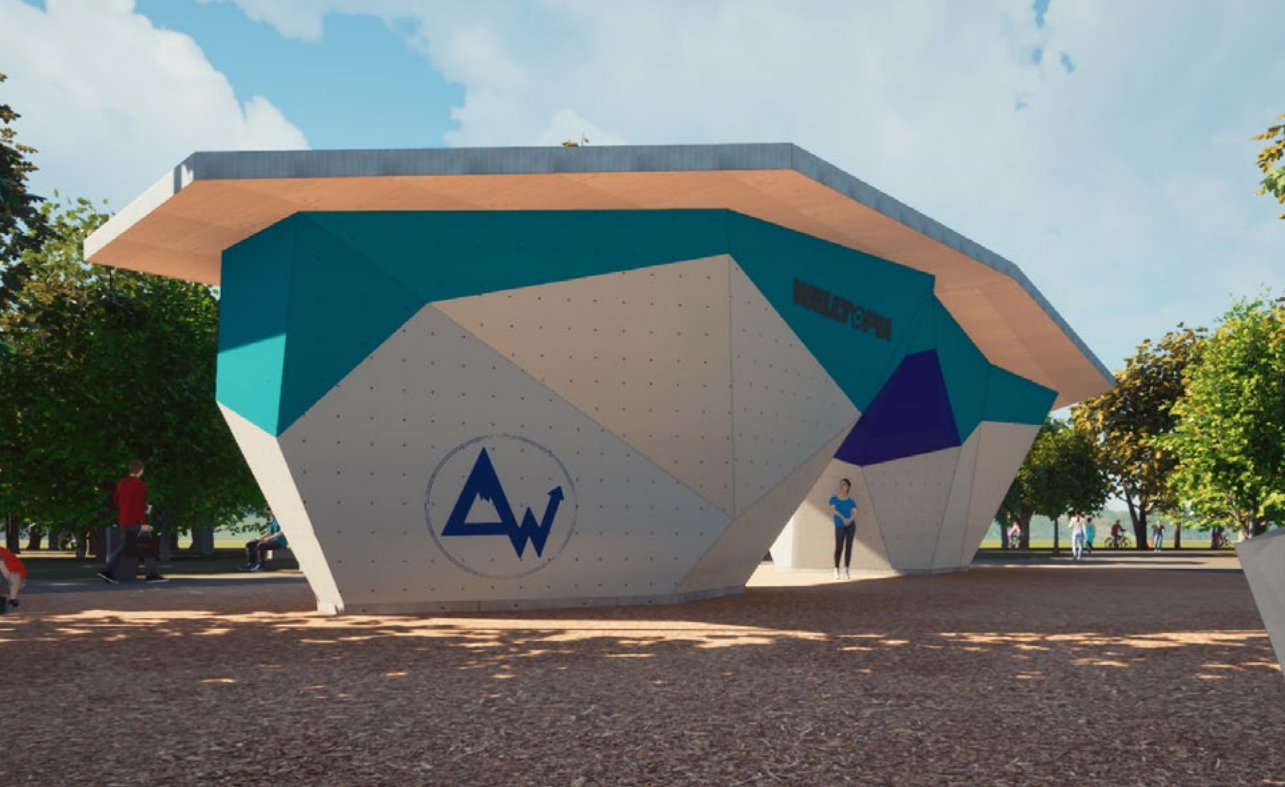


Aufwind Aktivpark Outdoor Boulder

AUSTRIA, GARSTEN

Completed	2022
Climbing Area	255 m ² / 2 745 ft ²
Style	Geome3x
Facility	Outdoor Boulder

WWW.AUFWIND-AKTIVPARK.AT



Climb Up Aix

Completed	2017
Climbing Area	2 800 m ² 30 138 ft ²
Style	Geome3x
Facility	Full Service Climbing Gym

FRANCE, BOUC-BEL-AIR

WWW.AIX-BOUCBELAIR.CLIMB-UP.FR



Bergstation Tirol

Completed	2016
Climbing Area	277 m ² 2 981 ft ²
Style	Geome3x
Facility	Full Service Climbing Gym

AUSTRIA, TELFS

WWW.BERGSTATION.TIROL



SVN Kletterzentrum

Completed	2017
Climbing Area	1 234 m ² 13 282 ft ²
Style	Geome3x
Facility	Multisport Center

GERMANY, MUNCHEN

WWW.SVN-MUENCHEN.DE/



Boulderwand Amras

Completed	2020
Climbing Area	139 m ² 1 496 ft ²
Style	Geome3x, Rocktopia
Facility	Outdoor Playground

AUSTRIA, INNSBRUCK



U.S. National White-water Center

Completed	2016
Climbing Area	502 m ² 5 409 ft ²
Style	3D Curves
Facility	Adventure Sports Center

USA, CHARLOTTE

WWW.USNWC.ORG/ACTIVITY/CLIMBING



Griffig

Completed	2015
Climbing Area	660 m ² 7 104 ft ²
Style	Geome3x, Rocktopia
Facility	Full Service Climbing Gym

SWITZERLAND, USTER

WWW.GRIFFIG.COM



Kletterhalle Mondsee OAV

AUSTRIA, MONDSEE

Completed	2015
Climbing Area	670 m ² 7 211 ft ²
Style	Geome3x
Facility	Full Service Climbing Gym

WWW.KLETTERHALLE-MONDSEE.AT

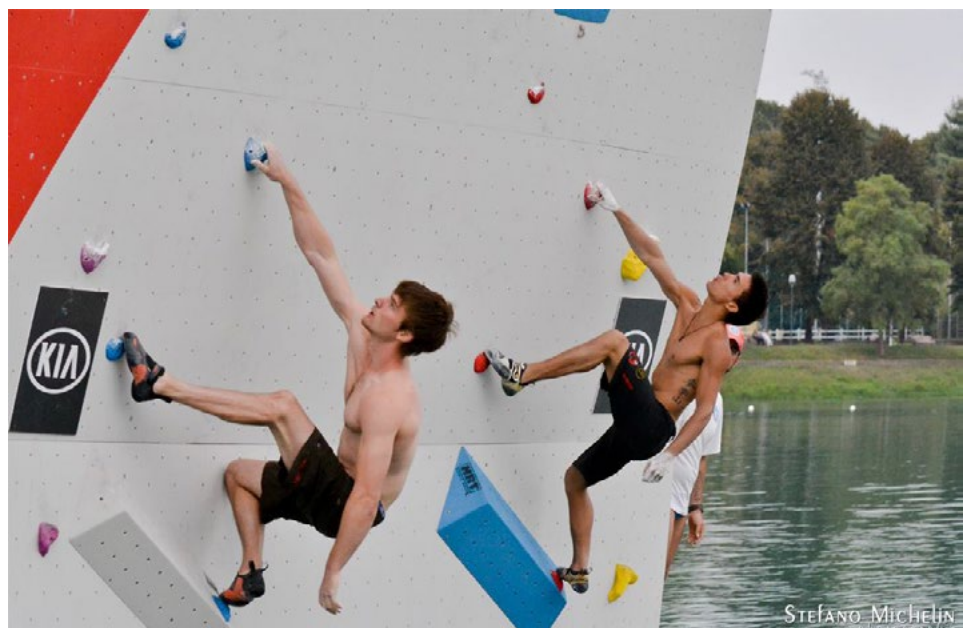
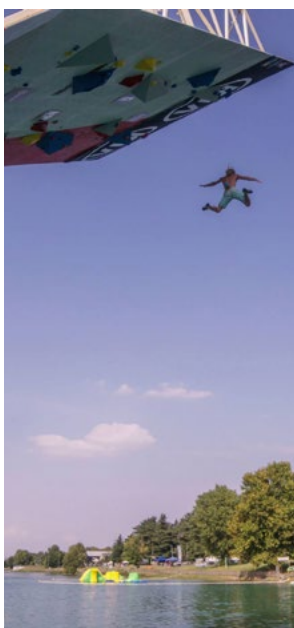


Psicocomp MILAN

ITALY, MILAN

Completed	2015
Climbing Area	117 m ² 1 259 ft ²
Style	Geome3x
Facility	Comp Wall

WWW.PSICOCOMP.COM/MILANO-OUTDOOR-GAMES-2015



STEFANO MICHELIN

Kletterzentrum Ap 'n Daun

Completed	2015
Climbing Area	2 022 m ² 21 764 ft ²
Style	Rocktopia, 3D Curves, Geome3x
Facility	Full Service Climbing Gym

SWITZERLAND, CHUR

WWW.KLETTERZENTRUMCHUR.CH



The Cliffs Dumbo Boulders

USA, NEW YORK

Completed	2015
Climbing Area	453 m ² 4 886 ft ²
Style	3D Curves
Facility	Outdoor Boulder Gym

WWW.DUMBO.THECLIFFSCLIMBING.COM



Climbing Tower Martinique

FRANCE, MARTINIQUE

Completed	2015
Climbing Area	90 m ² 967 ft ²
Style	Geome3x
Facility	Outdoor Climbing Tower



Vaude Headquarters

Completed	2015
Climbing Area	160 m ² 1 722 ft ²
Style	Geome3x
Facility	Climbing Gym

GERMANY, TETTANG

WWW.VAUDE.COM

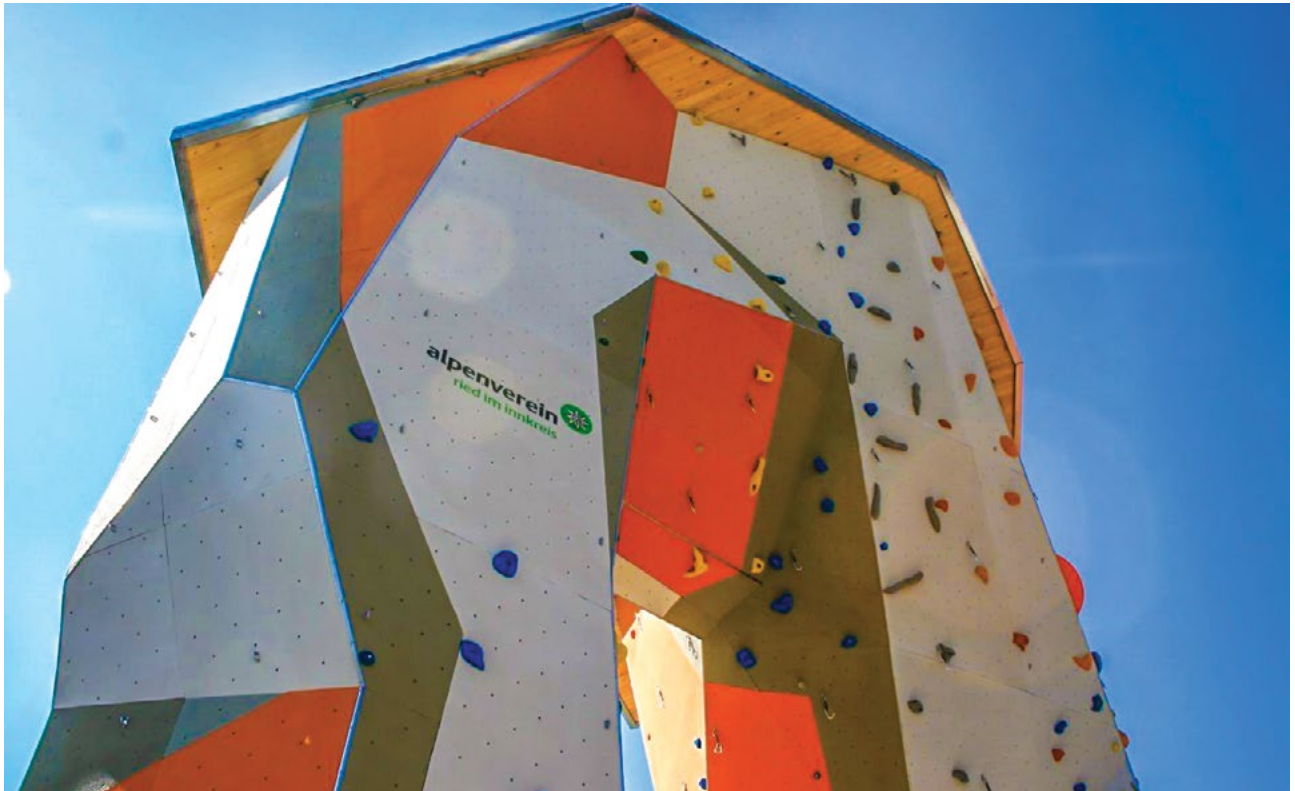


Alpenverein Ried im Innkreis

AUSTRIA, RIED

Completed	2015
Climbing Area	280 m ² 3 013 ft ²
Style	Geomex3x
Facility	Outdoor Climbing Tower

WWW.ALPENVEREIN.AT/RIED-IM-INNKREIS/



Chamonix World Cup

Completed	2015
Climbing Area	750 m ² 8 037 ft ²
Style	Geomex3x
Facility	Competition Wall

FRANCE, CHAMONIX



DAV Landshut

Completed	2014
Climbing Area	500 m ² 5 382 ft ²
Style	Geome3x
Facility	Facade Climbing Wall

GERMANY, LANDSHUT

WWW.ALPENVEREIN-LANDSHUT.DE

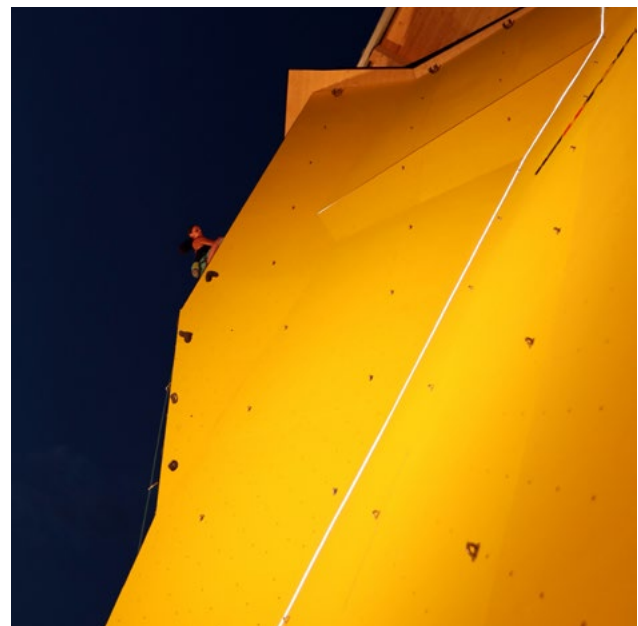


Kletterhalle Villach

Completed	2014
Climbing Area	216 m ² 2 325 ft ²
Style	Geome3x
Facility	Full Service Climbing Gym

AUSTRIA, VILLACH

WWW.KLETTERHALLEVILLACH.AT

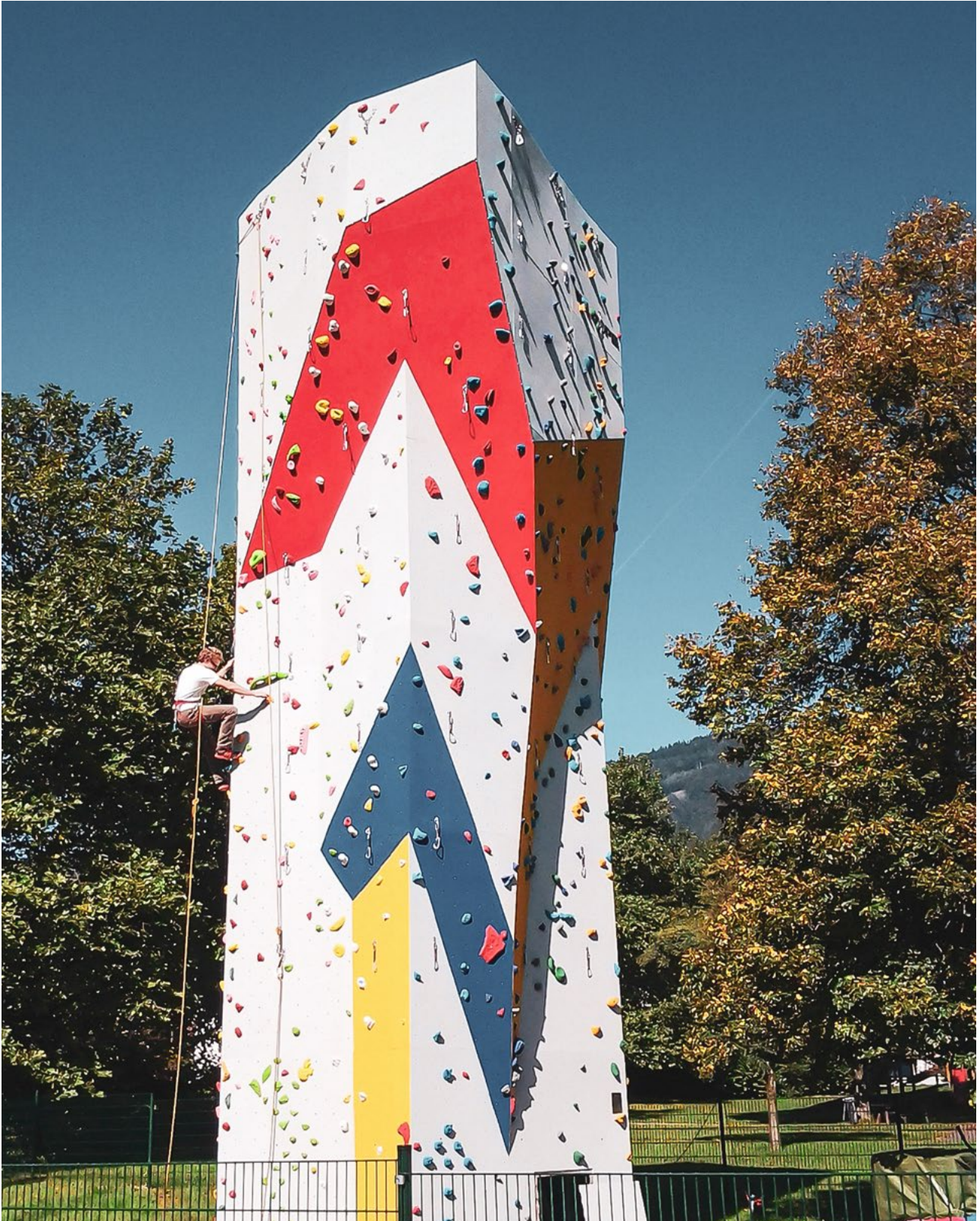


Kletterturm Unterach

AUSTRIA, UNTERACH

Completed	2014
Climbing Area	190 m ² 2 045 ft ²
Style	Geome3x, Rocktopia
Facility	Multisport center

WWW.BERGFEX.AT/SOMMER/UNTERACH



DAV Mindelheim

Completed	2020
Climbing Area	535 m ² 5 759 ft ²
Style	Geome3x
Facility	Full Service Climbing Gym

GERMANY, MINDELHEIM

WWW.ALPENVEREIN-MINDELHEIM.DE/



DAV Starnberg

GERMANY, STARNBERG

Completed	2014
Climbing Area	223 m ² 2 400 ft ²
Style	Geome3x, Rocktopia
Facility	Full Service Climbing Gym

WWW.DAV-STARNBERG.DE



Hotel Salzburgerhof

Completed	2014
Climbing Area	250 m ² 2 690 ft ²
Style	Geome3x
Facility	Hotel

AUSTRIA, LEOGANG

WWW.SALZBURGERHOF.EU



Salzburg Kletteranlage Bergrettung

AUSTRIA, SALZBURG

Completed	2014
Climbing Area	115 m ² 1 237 ft ²
Style	Geome3x, Rocktopia
Facility	Public Space

WWW.BERGRETTUNG-SALZBURG.AT



Arbor et Sens

Completed	2013
Climbing Area	200 m ² 2 152 ft ²
Style	Rocktopia Limestone
Facility	Public Space

FRANCE, SAINT GENES DE LOMBAUD

WWW.ARBOR-ET-SENS.FR



Outdoor Boulder Park Orehovo

Completed	2013
Climbing Area	441 m ² 4 746 ft ²
Style	Rocktopia, 3D Curves
Facility	Public Space

RUSSIA

WWW.FACEBOOK.COM/PG/BOULDERPARKMSK

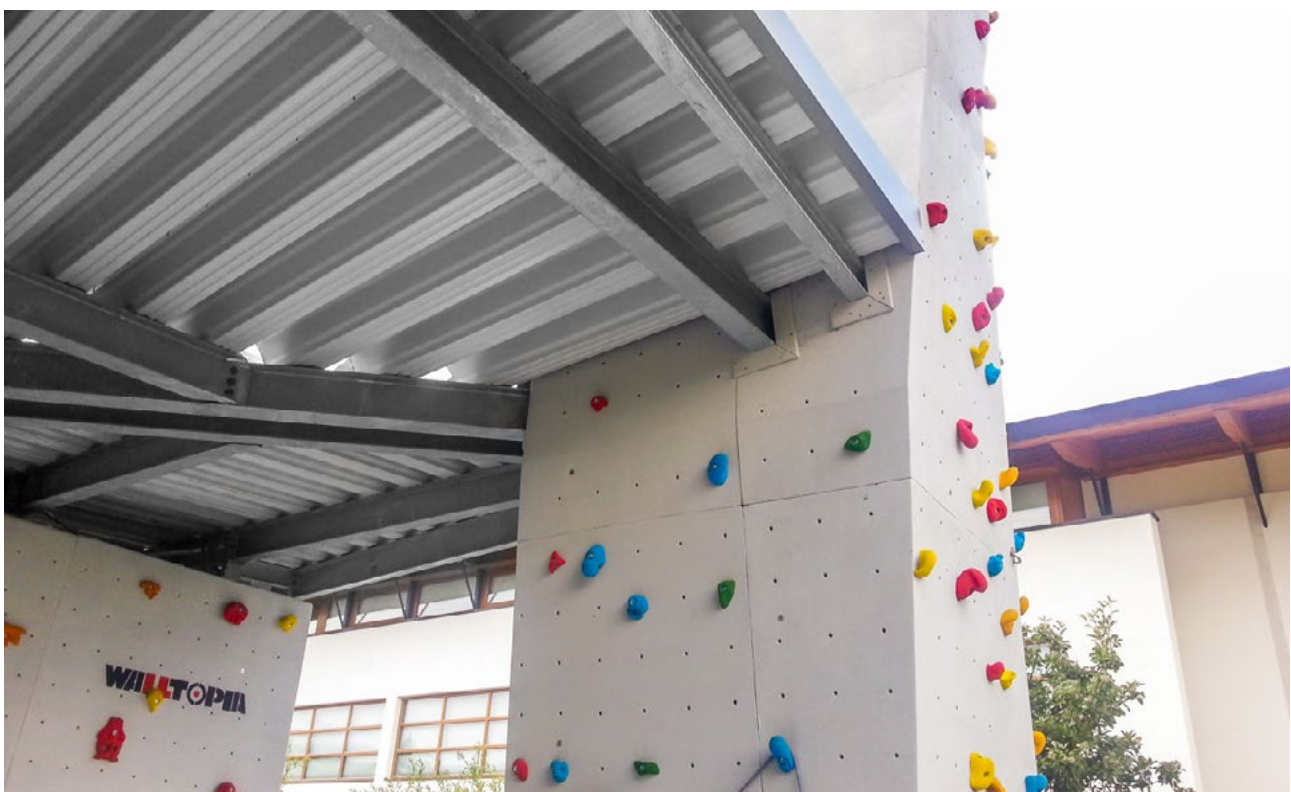


Aussenboulder & Kletterturm

AUSTRIA, FISS

Completed	2013
Climbing Area	80 m ² 861 ft ²
Style	Geome3x
Facility	Resort

WWW.SERFAUS-FISS-LADIS.AT/DE



Psicocomp UTAH

USA, SALT LAKE CITY

Completed	2013
Climbing Area	126 m ² 1 356 ft ²
Style	3D Curves
Facility	Competition Wall

WWW.PSICOCOMP.COM



K5 DAV Kletterzentrum

GERMANY, ROTTWEIL

Completed	2013
Climbing Area	1 918 m ² 20 645 ft ²
Style	Geome3x, Rocktopia
Facility	Full Service Climbing Gym

WWW.K5-KLETTERZENTRUM.DE



Mur de Tambourin

Completed	2013
Climbing Area	95 m ² 1 022 ft ²
Style	Geome3x
Facility	Multisport center

FRANCE, VENDARGUES



Blau Weiss Buchholz

GERMANY, BUCHHOLZ

Completed	2013
Climbing Area	350 m ² 3 767 ft ²
Style	Geome3x
Facility	Full Service Climbing Gym

WWW.BLAU-WEISS-BUCHHOLZ.DE



Copyright © Blau-Weiss Buchholz e.V.



Kletterhalle Felsenfest

AUSTRIA, SAALFELDEN

Completed	2012
Climbing Area	1 655 m ² 17 814 ft ²
Style	Geome3x
Facility	Full Service Climbing Gym

WWW.FELSENFEST.CC



Competition Boulder

Completed	2012
Climbing Area	181 m ² 1 948 ft ²
Style	Geome3x, 3D Curves
Facility	Competition Wall

NORWAY, OSLO

WWW.KLATRING.NO



Sparkasse DAV Kletterwelt Neu-Ulm

Completed	2011
Climbing Area	755 m ² 8 127 ft ²
Style	Geome3x, Rocktopia, 3D curves
Facility	Full Service Climbing Gym

GERMANY, NEU ULM

WWW.SPARKASSENDOME.DE

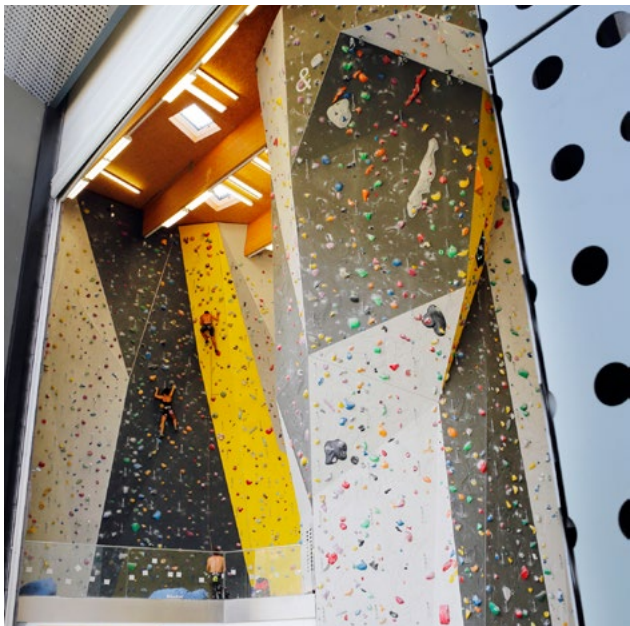
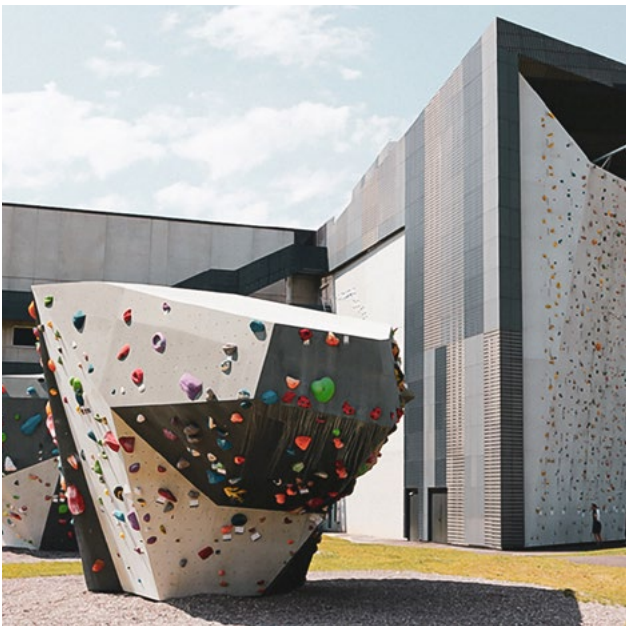


Salewa Climbing Hall

ITALY, BOLZANO

Completed	2020
Climbing Area	950 m ² 10 225 ft ²
Style	Geome3x, Rocktopia
Facility	Full Service Climbing Gym

WWW.SALEWA-CUBE.COM/EN/CLIMBING-HALL



Skopje Competition Wall

MACEDONIA, SKOPJE

Completed	2011
Climbing Area	405 m ² 4 359 ft ²
Style	Geome3x
Facility	Competition Wall

WWW.CLIMBING-MACEDONIA.COM

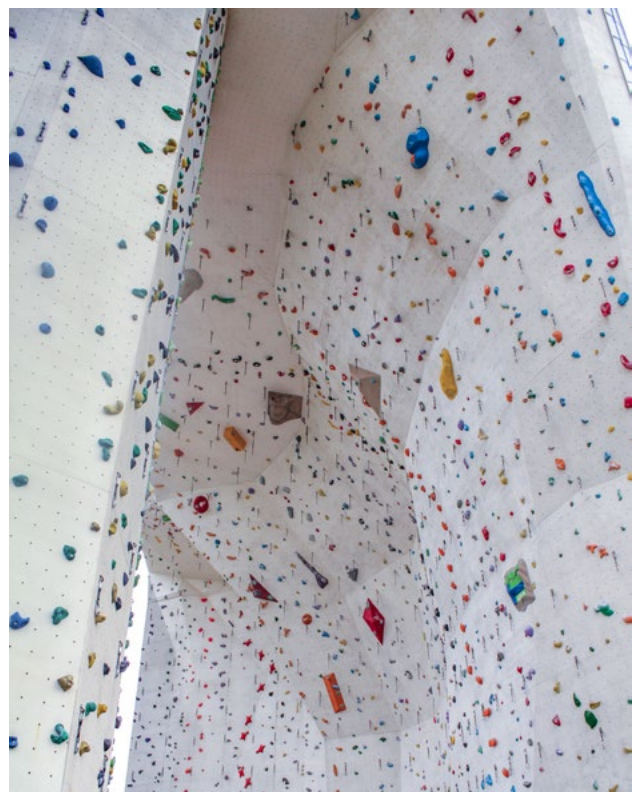


Kletterhalle Imst

Completed	2010
Climbing Area	2 000 m ² 21 527 ft ²
Style	Geom3x
Facility	Outdoor Climbing Center

AUSTRIA, IMST

WWW.KLETTERN-IMST.COM

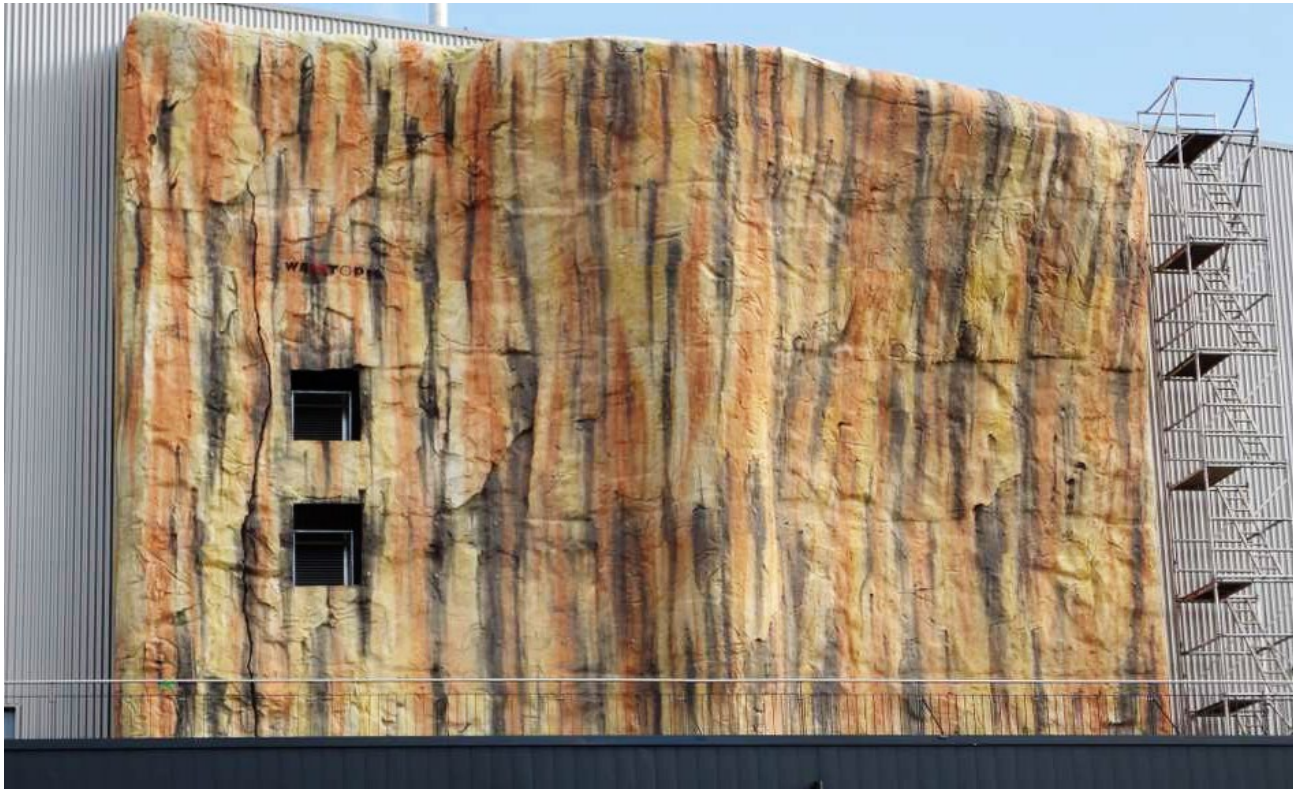


Die Kletterhalle

Completed	2010
Climbing Area	380 m ² 4 090 ft ²
Style	Rocktopia
Facility	Full Service Climbing Gym

SWITZERLAND, ST. GALLEN

WWW.DIEKLETTERHALLE.CH



High Moves

GERMANY, BENSHEIM

Completed	2009
Climbing Area	400 m ² 4 305 ft ²
Style	Geome3x
Facility	Full Service Climbing Gym

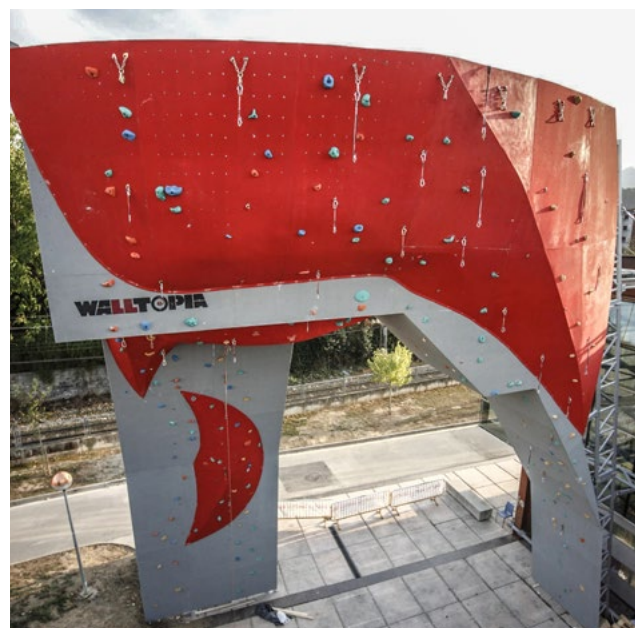
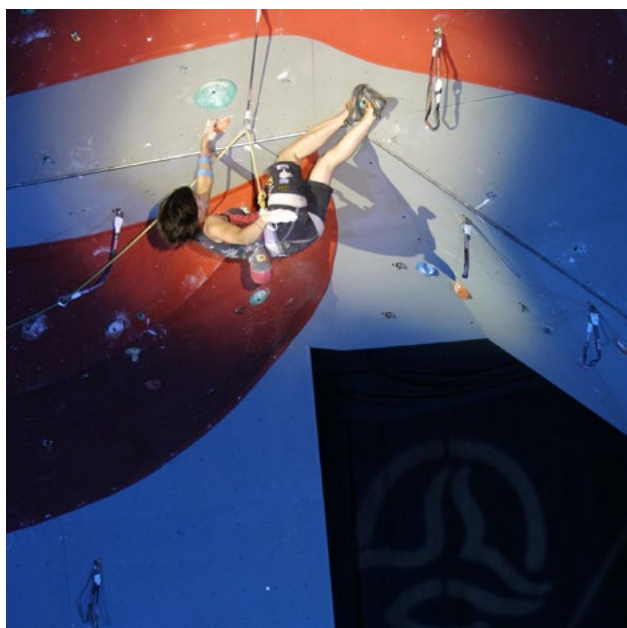
WWW.KLETTERHALLE-BENSHEIM.DE



Durango Climbing Masters

SPAIN

Completed	2009
Climbing Area	135 m ² 1 453 ft ²
Style	Geome3x, 3D Curves
Facility	Competition Wall

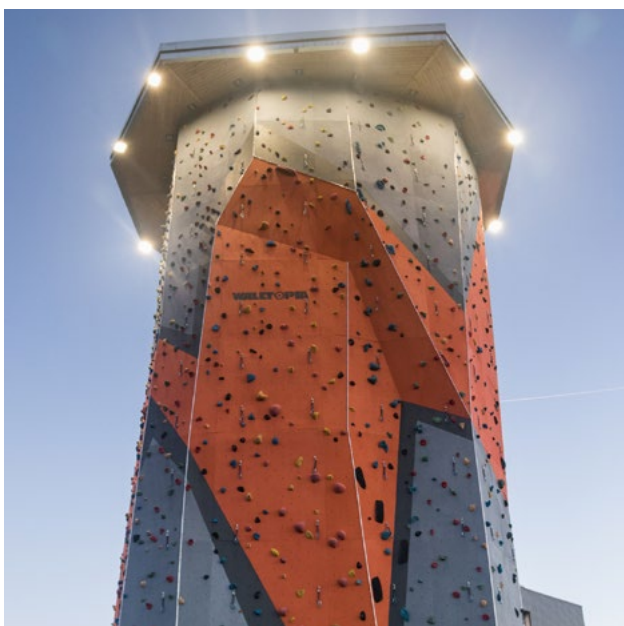


Klimax

BELGIUM, PUURS

Completed	2007 / 2020
Climbing Area	800 m ² 8 611 ft ²
Style	Geome3x
Facility	Full Service Climbing Gym

WWW.BVKB.BE



sales@walltopia.com | www.walltopia.com

