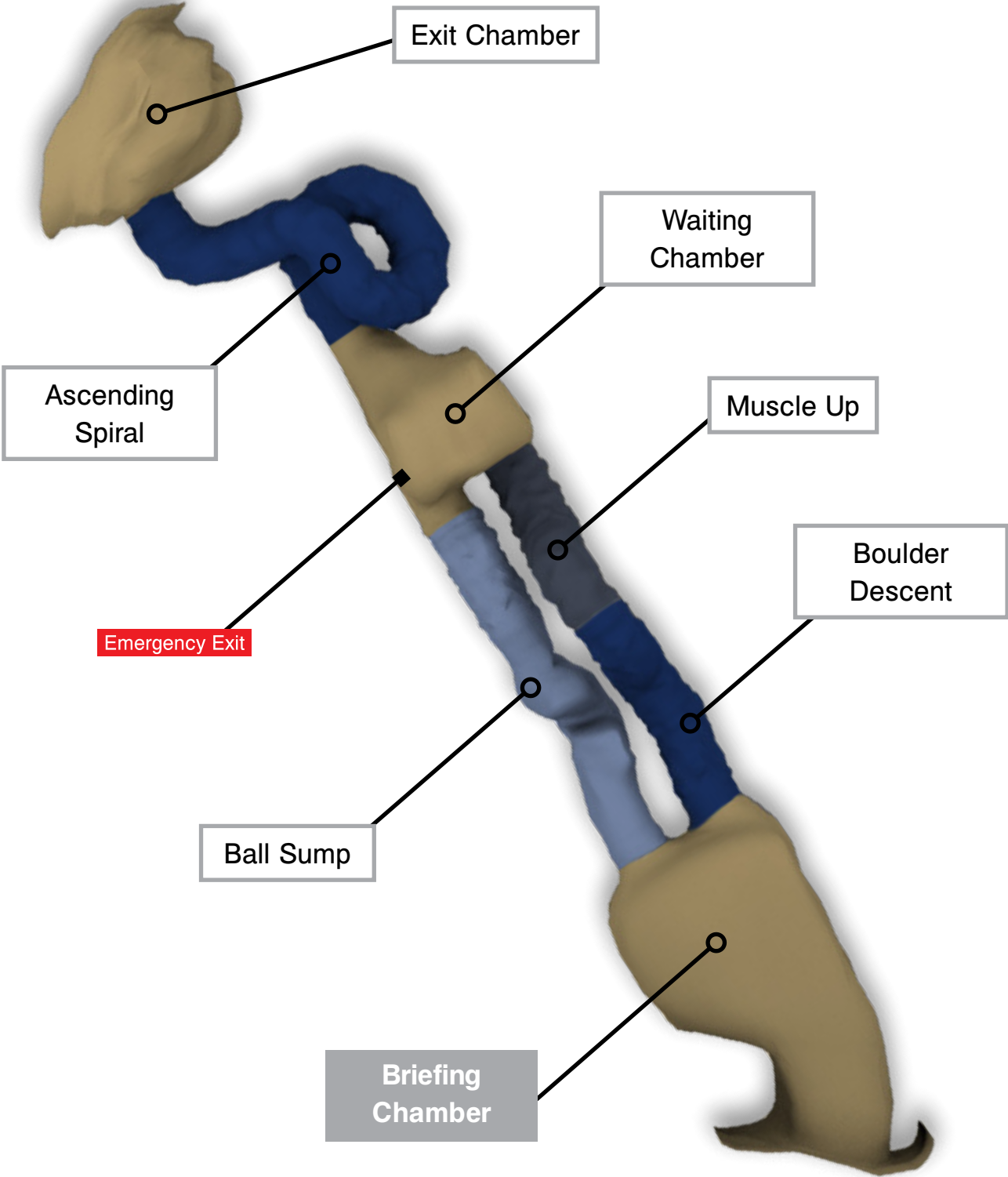
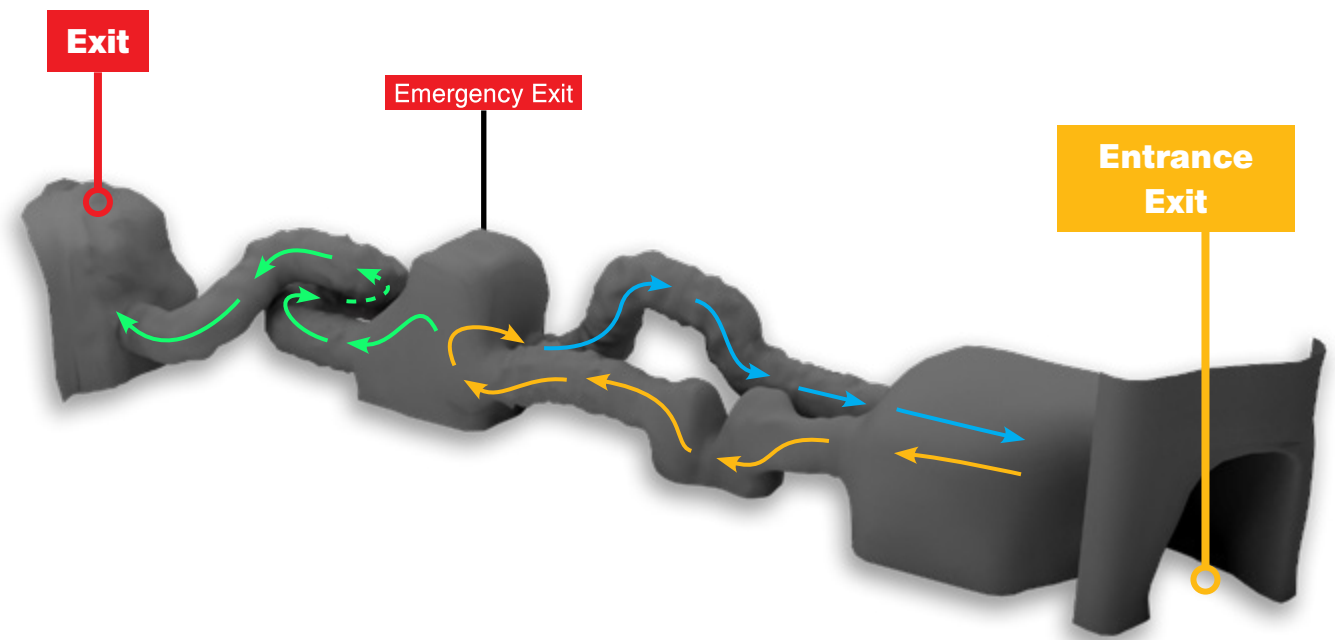


SAMPLE PROJECT 1



Components

- Ventilation system
- LED lighting
- CCTV
- Sound system
- Emergency exits
- Gear (helmets, knee pads, torches)
- Ball sump
- Rubber floor



Momentum Capacity	14 people	
Footprint	45 m ²	484.3 ft ²
Height	3,5 m	11.4 ft
Operational Length	27 m	88.5 ft
Routes	2	
Min. Operators Required	1	
GRP	200 m ²	2,152.7 ft ²