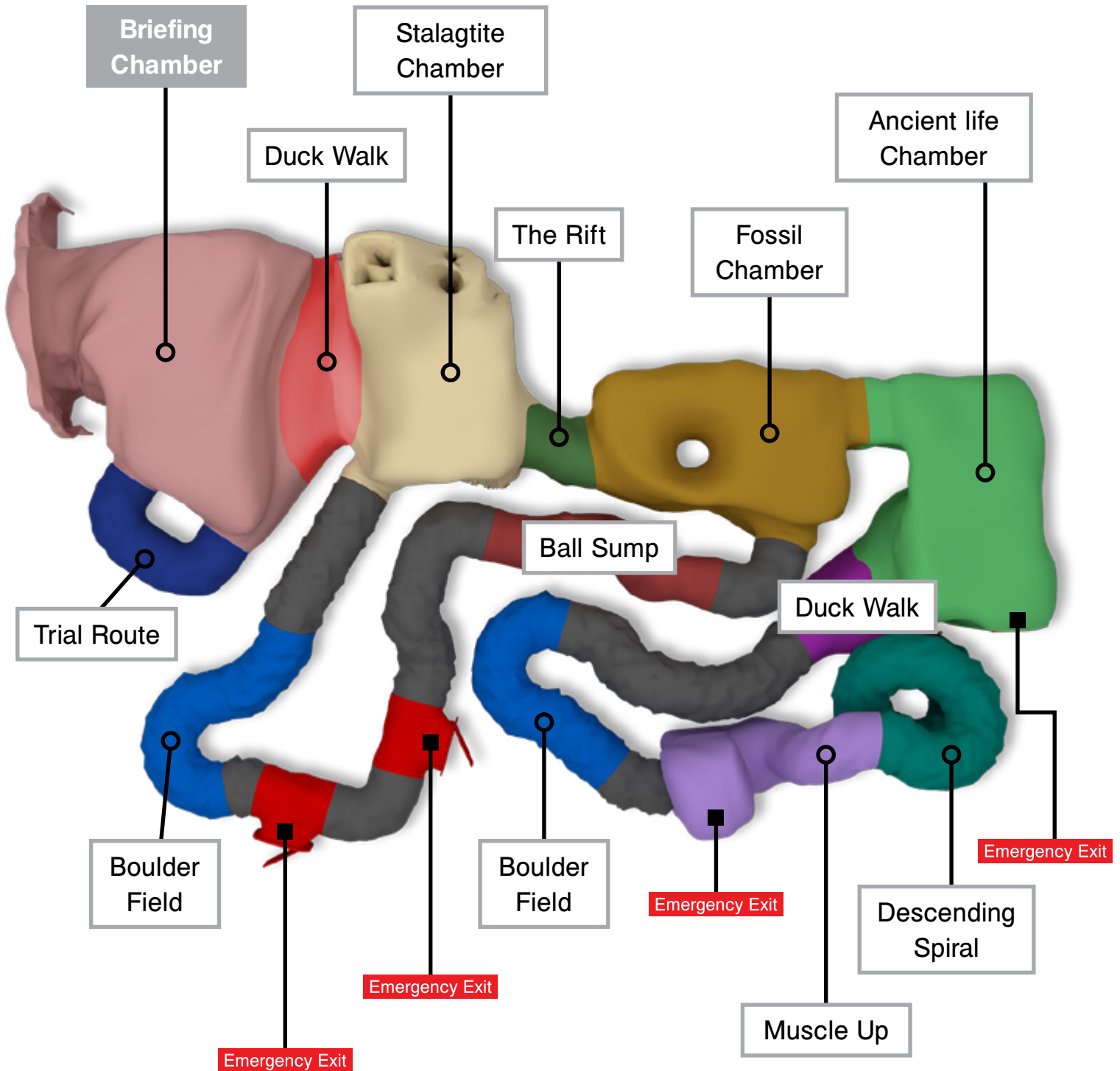
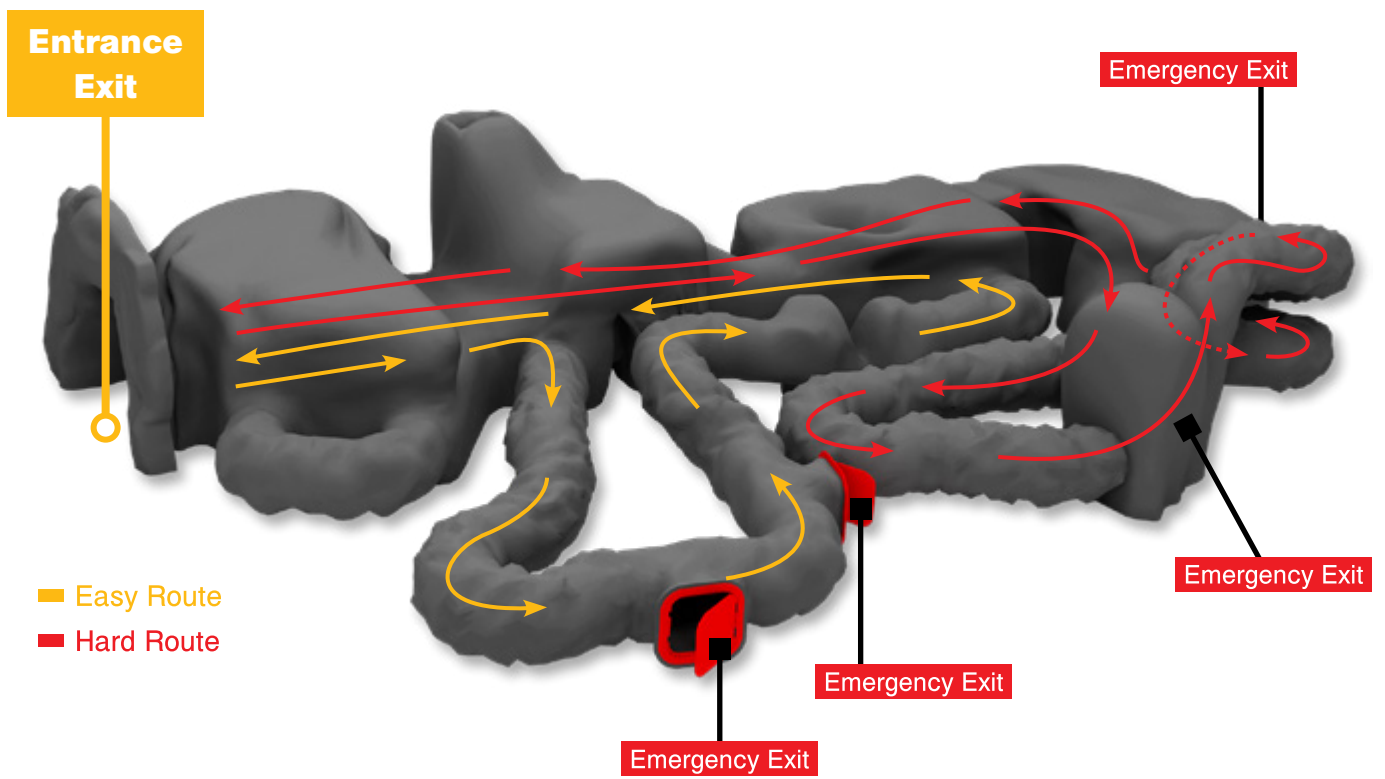


SAMPLE PROJECT 4



Components

- Ventilation system
- LED lighting
- CCTV
- Sound system
- Emergency exits
- Gear (helmets, knee pads, torches)
- Ball sump
- Rubber floor



Momentum Capacity	35 people	
Footprint	165 m ²	1,776 ft ²
Height	3,5 m	11.4 ft
Operational Length	86 m	282.1 ft
Routes	2	
Min. Operators Required	2	
GRP	440 m ²	4,736.1 ft ²